

Eco-friendly production of novel antimicrobial sophorolipids from *Meyerozyma guilliermondii* cultivated on jojoba oil cake for combating drug-resistant microbes

Mohamed Abdelraof¹, Amr S. Al-Kashef², Abd El-Nasser A. Khattab³, Mohamed U. Nooman², Mohamed M.I. Helal^{4,5}, Abdullah Saleh Alomaym⁵, Farhan Qalib Alruwaili⁶, Madeha O. I. Ghobashy^{7,8,9}

¹National Research Centre, Microbial Chemistry Department, Biotechnology Research Institute, Cairo, Egypt.

²Biochemistry Department, Biotechnology Research Institute, National Research Centre, Cairo, Dokki, Egypt.

³Genetics and Cytology Department, Biotechnology Research Institute, National Research Centre, Cairo, Egypt.

⁴Chemistry of Natural and Microbial Products Department, Pharmaceutical and Drug Industries Research Institute, National Research Centre, Cairo, Egypt.

⁵Medical Sciences & Preparatory Year Department, North Private College of Nursing, Arar, , KSA.

⁶Sub-Central Blood Bank, Arar, Saudi Arabia.

⁷Department of Biology, Faculty of Science, University of Tabuk, Tabuk, Saudi Arabia.

⁸Biodiversity Genomics Unit, Faculty of Science, University of Tabuk, Tabuk, Saudi Arabia.

⁹Department of Microbiology, Faculty of Science, Ain Shams University, Cairo, Egypt.

Doi: <http://doi.org/10.7324/JAPS.2026.265412>

SUPPLEMENTARY MATERIAL

Table S1: Accession number, closest phylogenetic relative, and identity percents of BLAST top hit of W1 strain.

Name	Accession number	Closest phylogenetic relative and accession number	Identity %
<i>Meyerozyma guilliermondii</i>	ON242308.1	<i>Meyerozyma guilliermondii</i> isolate I22	100.00
<i>Meyerozyma guilliermondii</i>	ON242325.1	<i>Meyerozyma guilliermondii</i> isolate I29	99.83
<i>Meyerozyma guilliermondii</i>	LC412712.1	<i>Meyerozyma guilliermondii</i> isolate IFM 51553	99.48
<i>Meyerozyma guilliermondii</i>	LC412715.1	<i>Meyerozyma guilliermondii</i> isolate IFM 54665	99.13
<i>Meyerozyma guilliermondii</i>	MZ254922.1	<i>Meyerozyma guilliermondii</i> isolate MG_2284-8	99.13
<i>Meyerozyma guilliermondii</i>	MG601175.1	<i>Meyerozyma guilliermondii</i> strain Q1	99.13
<i>Meyerozyma guilliermondii</i>	LC412726.1	<i>Meyerozyma guilliermondii</i> isolate IFM 56867	99.13
<i>Meyerozyma guilliermondii</i>	LC412722.1	<i>Meyerozyma guilliermondii</i> isolate IFM 55629	99.13
<i>Meyerozyma guilliermondii</i>	JF508433.1	<i>Meyerozyma guilliermondii</i> isolate GK8 18S	99.13
<i>Meyerozyma guilliermondii</i>	LC412732.1	<i>Meyerozyma guilliermondii</i> isolate IFM 58081	99.13

Table S2. Antibiotic profile of the bacterial pathogens

Bacterial Pathogen	Antibiotic reference (R/S)										No. of Resistance	% Of Resistance
	E	K	VA	A	CL	CI	PB	G	DA	RF		
<i>Staphylococcus aureus</i>	R	R	R	R	R	S	S	S	R	R	7	70
<i>Salmonella typhimurium</i>	R	R	S	R	R	S	S	R	R	S	6	60
<i>Acinetobacter baumannii</i>	R	R	R	R	R	S	S	R	S	R	7	70

E - Erythromycin (macrolide), K - Kanamycin (aminoglycoside), VA - Vancomycin (glycopeptide), A - Ampicillin (penicillin beta-lactam), CL- Cephalexin (cephalosporin) , CI - Ciprofloxacin (fluoroquinolone), PB- Polymyxin B (polypeptide), G - Gentamicin (aminoglycoside), DA- Clindamycin (lincosamide), RF- Rifamycin (macrolactams)

Table S3. Antibiotic profile of the fungal pathogen

Fungal Pathogen	Antibiotic reference (R/S)						No. of Resistance	% Of Resistance
	CLT	FLU	ITR	NY	POS	AMB		
<i>Candida albicans</i>	R	R	R	S	R	S	4	66.6

C - Clotrimazole, F- Fluconazole, IT- Itraconazole, NY-Nystatine, POS-Posaconazole, AMB- Amphotericin

>*Meyerozyma guilliermondii* isolate W1

GTATTCTTTTGC GCGCTTAACTGCGCGGCGAAAAACCTTACACACAGTGTCTTTTTGA
TACAGAACTCTTGCTTTGGTTTGGCCTAGAGATAGGTTGGGCCAGAGGTTTAACAAA
ACACAATTTAATTATTTTACAGTTAGTCAAATTTTGAATTAATCTTCAAACCTTCA
ACAACGGATCTCTTGGTTCTCGCATCGATGAAGAACGCAGCGAAATGCGATAAGTA
ATATGAATTGCAGATTTTCGTGAATCATCGAATCTTTGAACGCACATTGCGCCCTCT
GGTATTCCAGAGGGCATGCCTGTTTGAGCGTCATTTCTCTCTCAAACCCCGGGTTTG
GTATTGAGTGATACTCTTAGTCGGACTAGGCGTTTGCTTGAAAAGTATTGGCATGGG
TAGTACTAGATAGTGCTGTCGACCTCTCAATGTATTAGGTTTATCCAACCTCGTTGAAT
GGTGTGGCGGGATATTTCTGGTATTGTTGGCCCGGCCTTACAACAACCAAACAAGTT
TGACCTCAAATCAGGTAGGAATACCCGCTGAACTTAAGCATATCTAAAAGCGGGGA
GGA

Fig. S1. Final S1-FASTA raw sequence of W1 strain that entered into the geneBank.

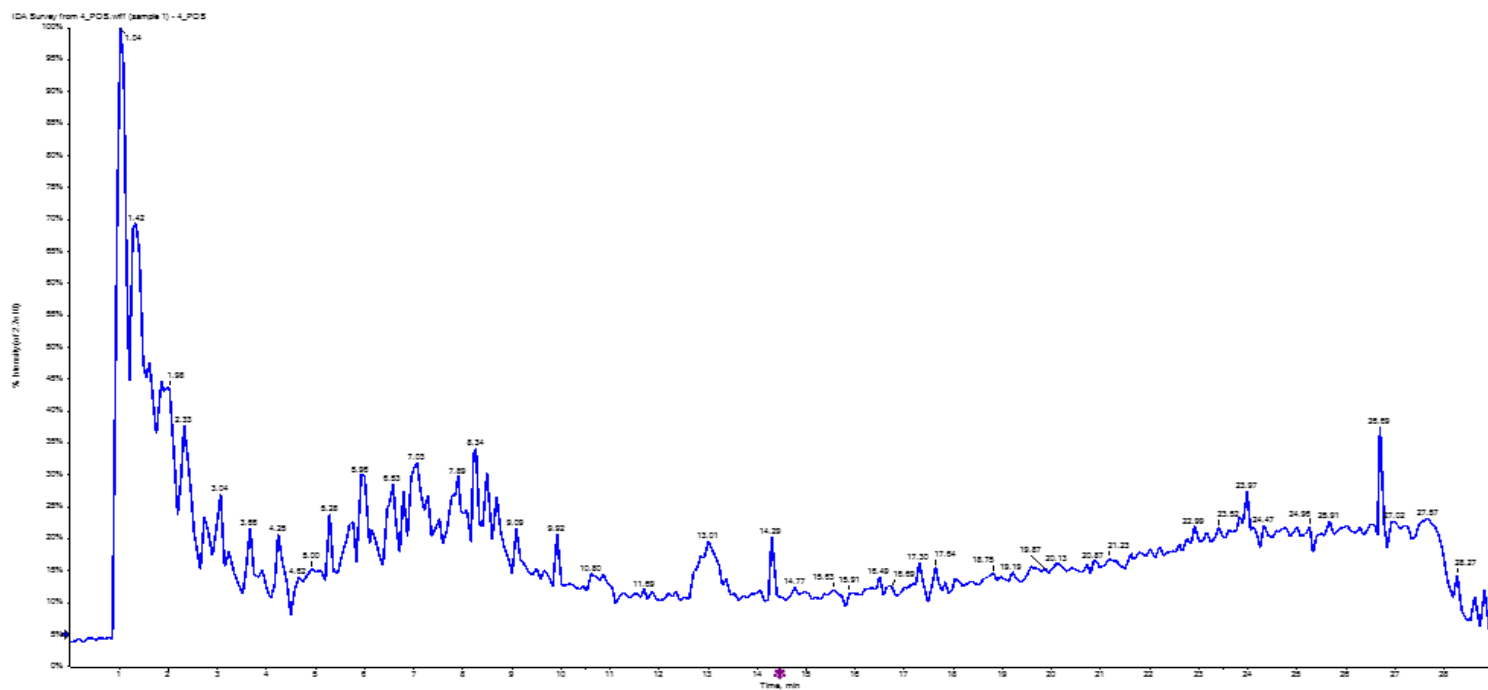


Figure S2. Chromatogram obtained using +ESI and LC-MS/MS for the produced extract.