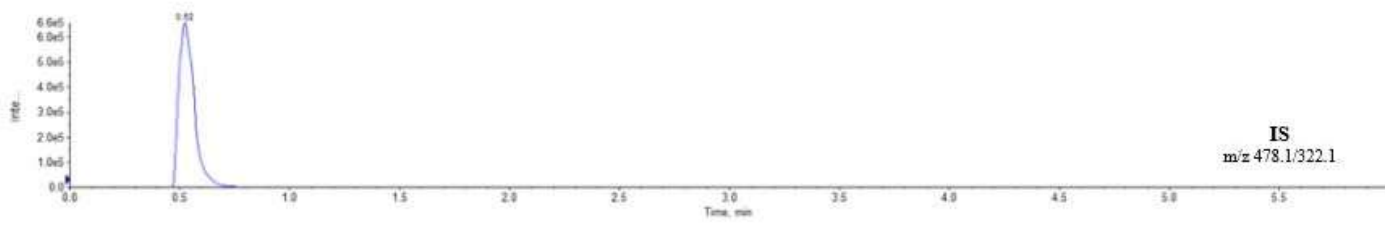
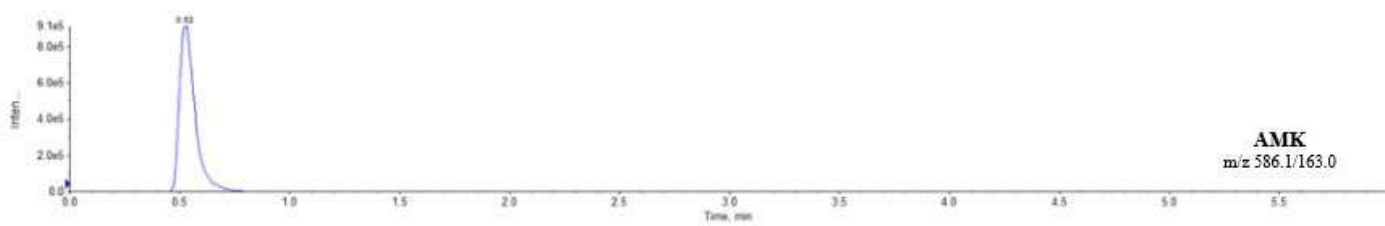
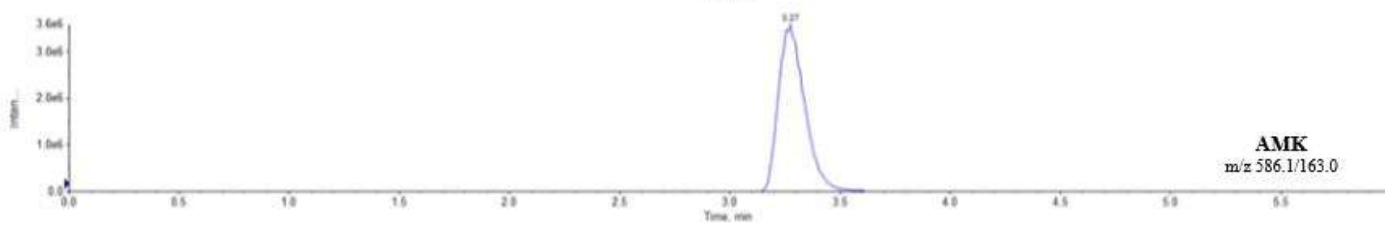
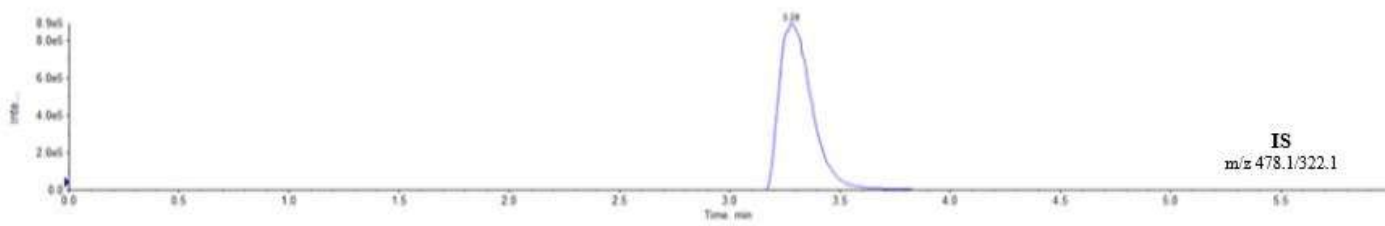
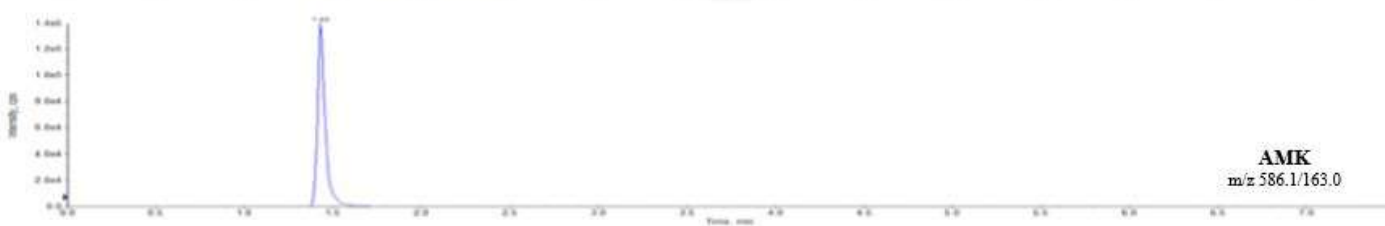
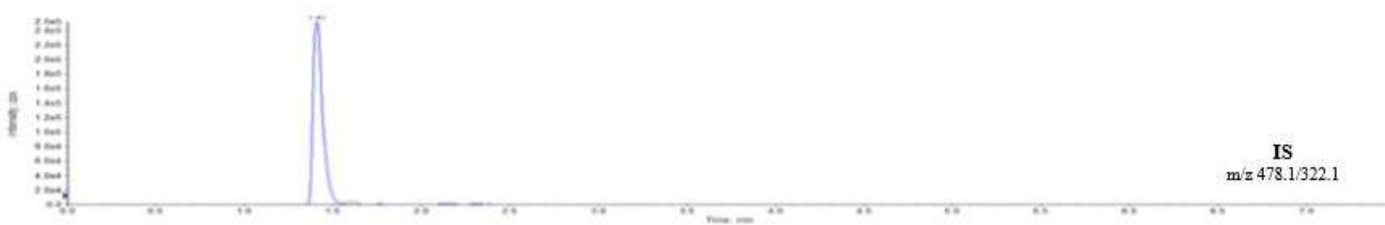
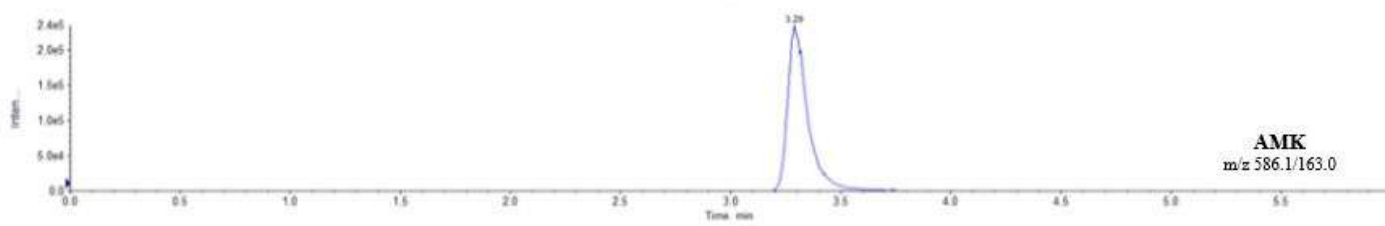
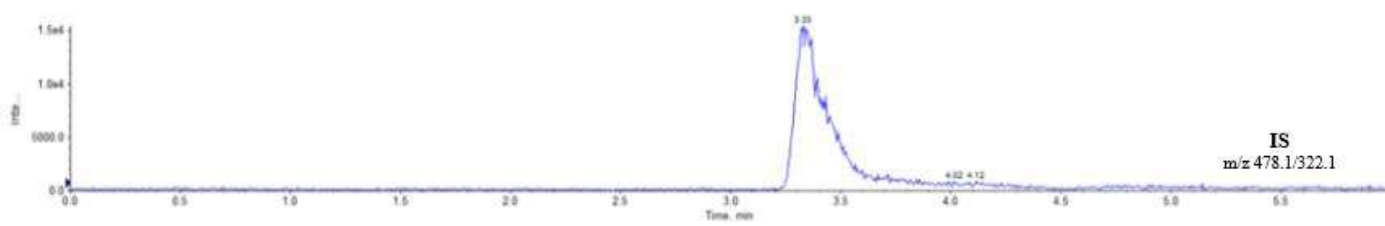


**A****B****C****D**

**Supplementary Figure 1. Chromatograms obtained from LC-MS/MS method optimization for determination of AMK with GS as IS, in various condition: (A) C18 column with initial MP and gradient; (B) C8 column with initial MP and gradient; (C) C8 column with initial MP, new gradient; (D) C8 column, addition of 5mM ammonium formate in MP A, new gradient, and optimize PP procedures (as final optimize condition)**