



# Microbial profiling of wound pathogens in isolates from an Egyptian hospital using a microarray chip

Mohamed Mohamed Adel El-Sokkary

Microbiology Department, Faculty of Pharmacy, Mansoura University, Mansoura, Egypt.

## ARTICLE INFO

Received on: 26/12/2020  
Accepted on: 18/06/2021  
Available online: 05/08/2021

### Key words:

Wound infection, mixed infection, microbial diversity, PCR, microarrays.

## ABSTRACT

Chronic polymicrobial infections represent diagnostic challenges for both molecular and culture methods. Chronic wounds, inducing chronic pain and reducing the mobility of individuals, have a notable effect on the quality of life. At any given time, 1% of the population is usually affected and, therefore, multiple treatments are also required. Identification of the etiology of such infections facilitates the appropriate treatment. In this study, 20 wound samples were collected from 20 patients with suspected wound infection. The panel of the current assay targets 12 clinically relevant aerobic pathogens, commonly associated with chronic wound infection. Microbial wound infections were detected by both usual polymerase chain reaction (PCR) and subsequently testing using the DNA chip. In the current study, the results of culture-free bacterial identification using the two methods of DNA analyses were compared. By molecular detection using PCR, seven different bacterial species were identified: *Citrobacter* spp. (100%), *Enterobacter* spp. (100%), *Klebsiella pneumoniae* (100%), *Pseudomonas aeruginosa* (90%), *Proteus* spp. (80%), *Escherichia coli* (60%), and *Staphylococcus aureus* (10%). Mixed microbial infections were detected in all samples indicating four, five, or six different bacteria, identified in each sample. Microarray detection in comparison to PCR indicated 100% matching. These results demonstrate the possibility of fast identification of wound infection pathogens even in a mixed culture in a very short time, which in turn facilitates the proceeding steps for proper treatment.

## INTRODUCTION

One of the most common health problems is usually associated with wound infection (Giacometti *et al.*, 2000), commonly induced by the entry of the bacteria through contamination of breached skin. With the same importance as renal and cardiovascular disorders, wounds can also have a similar impact on the quality of life. The Global Wound Care Market report indicated that this sector has reached about 20 billion dollars and is estimated to exceed 25 billion dollars in 2023 worldwide (Weller *et al.*, 2020). For this reason, and the pressure induced on both patients and the medical system, efforts have been made with the aim of managing wound infections and their associated pathological conditions, which in turn could improve the quality of life and increase life expectancy. In recent decades, different

approaches have been developed to improve the rate and quality of chronic wound healing (Nosrati *et al.*, 2021). Despite the multiple etiologies of wound infections, bacterial colonization usually characterizes their chronicity (Loesche *et al.*, 2017). Multiple variable organisms concerning wound infection were documented in previous studies (Melling *et al.*, 2001). Most wound culture isolation procedures implement swab cultures, the easiest trauma-free way, which avoid hazards of complications on the wound bed (Meyers, 2008). A variety of microbes such as bacteria, fungi, and parasites are associated with wound infection (Bowler *et al.*, 2001). Wound microbiome composition could also be influenced by ecological processes, which in turn induces the emergence of polymicrobial infections exhibiting both synergistic effect and enhanced tolerance to antimicrobials (Baishya and Wakeman, 2019; Kalan and Brennan, 2019). In addition, stable microbial communities are usually correlated with delayed healing (Loesche *et al.*, 2017; Sloan *et al.*, 2019). Moreover, genotypic effects could also be the possible way to explain the recently observed patient-specific immunological responses to the same microbial exposure (Deusenbery *et al.*, 2019). Both Gram-positive and Gram-negative

\*Corresponding Author  
Mohamed Mohamed Adel El-Sokkary, Microbiology Department,  
Faculty of Pharmacy, Mansoura University, Mansoura, Egypt.  
E-mail: [m\\_elsokkary2022@yahoo.com](mailto:m_elsokkary2022@yahoo.com)

bacteria are usually detected including *Escherichia coli*, *Proteus* spp., and *Klebsiella* spp., in addition to *Enterobacter* spp. and *Staphylococcus aureus*, which was also identified (El-Saed *et al.*, 2020; Gupta *et al.*, 2019). However, a challenging bacterium, *Pseudomonas aeruginosa*, exhibiting resistance to most antibacterial drugs, could also be detected (Bowler *et al.*, 2001). In addition, the presence of anaerobic bacteria at baseline infection could also be associated with worse healing outcomes (Min *et al.*, 2020). In contrast to the intestinal microbiota, normal skin is mainly colonized by only a few taxa including *Corynebacterium*, coagulase-negative *Staphylococci*, and *Propionibacterium* (Scharschmidt and Fischbach, 2013) in which sebaceous sites are dominated by lipophilic *Propionibacterium* species, while *Corynebacterium* and *Staphylococci* are preferentially abundant in moist areas (Costello *et al.*, 2009; Grice *et al.*, 2009; Oh *et al.*, 2014). Wound infections are classified into two major classes, skin and soft tissue infections, which are usually undistinguished upon the progression of infection. In addition, in these infections when untreated, infecting bacteria affect healing and may also produce other signs and symptoms. Moreover, wound infections are considered among the most leading nosocomial infections and are associated with increased morbidity and other medical expenses (Cutting and White, 2004). For assessing and diagnosing infection, the most common signs usually include redness, swelling, increased drainage, and increased pain. Therefore, microbial etiology is one of the fundamental steps required before starting the treatment protocols. Most microbial identification is usually based on the bacterial separation by an enrichment culture, which favors the selection of some microbes, while excluding other species. For this reason, bacterial identification is now shifting away from metabolic biochemical testing toward genetic or molecular identification (Espy *et al.*, 2006; Han *et al.*, 2011; Seng *et al.*, 2010). Molecular technologies have provided worldwide researchers with more rapid and sensitive tools to examine human microbiota, in comparison with the old culture-based testing (Bowler and Davies, 1999; Dowd *et al.*, 2008a). In most studies, universal primers for 16S rRNA genes are used, followed by specific identification approaches such as polymerase chain reaction (PCR) (Hill *et al.*, 2003) and denaturing gradient gel electrophoresis and sequencing (Dowd *et al.*, 2008a, 2008b; Hill *et al.*, 2003; Price *et al.*, 2009). In addition, these methods exhibited successfulness in the detection of bacteria in burn wounds (Pirnay *et al.*, 2000), blood (Rothman *et al.*, 2002; Wellinghausen *et al.*, 2004; Yang *et al.*, 2002), cerebrospinal fluid (Poppert *et al.*, 2005), joint fluid (Yang *et al.*, 2008), and heart tissue (Breitkopf *et al.*, 2005). Moreover, in most cases, each experiment can be executed in not more than a few hours (Ecker *et al.*, 2010). In the same respect, for developing new therapeutic strategies, the use of these techniques speeds up the early detection of infecting microorganisms assisting clinicians and pathologists to find out the appropriate treatment of hospitalized patients.

For the detection of pathogens, DNA probes are immobilized in microarray experiments, in which more than one copy of each target gene could be included (Cannon *et al.*, 2010; Shen *et al.*, 2015). However, the detection of wound-associated bacterial pathogens was rarely described in previous studies. The aim of this study is the detection of wound pathogens in mixed samples and their application in samples from Egyptian hospitals.

## MATERIALS AND METHODS

### Specimens collection and processing

Hospitalized immunocompetent symptomatic patients, almost all adults suffering from wound infection, were included in this study. Control samples were taken from nonhospitalized individuals and those free from any symptoms of wound infection. Samples were collected from 20 different patients admitted to one of the Mansoura hospitals in Egypt. This study was approved and funded by the Competitive Funding Projects Postgraduate Research and Cultural Affairs Sector, Mansoura University. The experimental protocol conducted in this study was approved by the Research Ethics Committee, Faculty of Pharmacy, Mansoura University, and conducted in accordance with the Declaration of Helsinki involving the use and handling of human subjects.

### Extraction of genomic DNA and DNA from Standard Cultures

Different bacterial cultures obtained from wound samples were prepared in LB broth, followed by incubation aerobically at 37°C and observation for the presence of visible microbial growth. Genomic DNAs were extracted from 37°C 24 hours cultures of wound samples using the genomic QIAamp DNA Mini Kit (QIAGEN, Hilden, Germany), according to the manufacturer's instructions. By using a Nanodrop instrument (OPTIZEN NanoQ, Mecasys, Daejeon, South Korea), the concentration of gDNA was determined. Purified DNAs were stored at -80°C.

### PCR Amplification and Labeling to Get Hybridization Targets

By starting from isolated gDNA as a template, nearly full-length 16S rRNA was amplified in a PCR reaction. Two different biotin-labeled primers were used: forward primer 27F (5'-AGAGTTTGTATCCTGGCTCAG) and reverse primer 1492R (5'-GGTTACCTTGTTACGACTT). Each PCR reaction is composed of 25 µl containing 2 µl of template DNA, 0.5 µM of each primer, 1.5 mM MgCl<sub>2</sub>, 0.2 mM dNTPs, 1 U Taq polymerase (Dream Taq Green DNA Polymerase, Fermentas), and to the final volume nuclease-free water. PCR reactions were carried out using Cyclor 003 PCR Machine [A & E Lab (UK)] with 2 minutes initial denaturation at 94°C, followed by 35 cycles of heating at 94°C for 30 seconds, cooling to 52°C for 30 seconds in an annealing step, and heating at 72°C for 30 seconds in an extension step, and a final extension at 72°C for 10 minutes. The 1% agarose gel and electrophoresis-separated PCR products were visualized by staining with ethidium bromide and UV light exposure.

### Strain-Specific Genes PCR Test

As described previously, amplification of both genomic DNA and standard DNA was carried out using primers (Biosearch Technologies) listed in Table 1. The diagnostic PCR screening consists of a panel of 12 taxa including *S. aureus*, *Staphylococcus pyogenes*, *Mycobacterium* spp., *P. aeruginosa*, *Enterobacter* spp., *Klebsiella pneumoniae*, *Haemophilus influenzae*, *E. coli*, *Enterococcus faecalis*, *Citrobacter* spp., *Proteus* spp., and *Clostridium* spp. PCR reactions began with heating at 94°C for 5 minutes, followed by 35 cycles starting with heating at 94°C for 30

**Table 1.** Different oligonucleotides used in this work to detect different species of bacteria.

Primer name	Sequence	Tm	Citation	
<i>Proteus mirabilis</i>	<i>Tuf</i> F	TCTACTTCACACGTAG	41	240 (Anbazhagan <i>et al.</i> , 2010)
	<i>Tuf</i> R	TTCTAACAGCTCTTCA		
<i>Enterobacter</i> spp.	Probe	TGTGGCTTCTGGAGCTAACGCGTTA	62	(Mao <i>et al.</i> , 2008)
	F	CGAGAGCCTGGTGCTG	48	180 (Anbazhagan <i>et al.</i> , 2010)
	R	GATTGGCTGACCCAAT		
	Probe	ACTCTTGACATCCAGAGAACTT	52	This study
All bacteria	F	GAGTTTGATCCTGGCTCAG	51	312 (Ginige <i>et al.</i> , 2013)
	R	GCTGCCTCCCGTAGGAGT		
<i>H. influenzae</i>	F	ACTTTTGGCGTTACTCTG	50	272 (van Ketel <i>et al.</i> , 1990)
	R	TGTGCCTAATTACCAGCAT		
	Probe	GCGTATTATCGGAAGATGAAAGTGCG	59	This study
<i>K. pneumoniae</i>	F	TCTGGACCGCTGGGAGCTGG	59	399 (Cole <i>et al.</i> , 2009)
	R	TGCCCGTTGACGCCCAATCC		
	Probe	CACTTTCAGCGGGAGGAAGGC	59	
<i>E. coli</i>	TEcol553	TGGGAGCGAAAATCCTG	47	219 (Maheux <i>et al.</i> , 2009)
	TEcol754	CAGTACAGGTAGACTTCTG		
	Probe	GGGAGTAAAGTTAATACCTTGCTCAT	55	
<i>S. aureus</i>	F	TGCTGGTGGTACATCAA	49	96 (Ruimy <i>et al.</i> , 2008)
	R	ACGGTCAATGCCATGATTTAA		
	Probe	AACATATGTGTAAGTAACTGTGCACATCTTG	59	
<i>P. aeruginosa</i>	F	CGAGTACAACATGGCTCTGG	53	116 (Feizabadi <i>et al.</i> , 2010)
	R	ACCGGACGCTCTTACCATA		
	Probe	GGGAGGAAGGGCAGTAAGTTA	53	
<i>Mycobacterium</i> spp.	F	GAACGGCTGATGACCAAACT	53	72 (Luo <i>et al.</i> , 2010)
	R	ATCAGCGATCGTGGTCCTG		
	Probe	CGATCCGAACCTGAGACCGGCTTTAAGG	64	
<i>E. faecalis</i>	F	ATCAAGTACAGTTAGTCTT	44	940 (Rathnayake <i>et al.</i> , 2011)
	R	ACGATTCAAAGCTAACTG		
	Probe	AACTGAACGTCCCCTGACGGTATCT	59	
<i>Citrobacter</i> spp.	F	GCTCAACCTGGGAACTGCATCCGA	62	529 (Anbazhagan <i>et al.</i> , 2010)
	R	AGTTCCCGGCCTAACCGCTGGCAA		
	Probe	GTACTTTCAGCGAGGAGGAAGG	56	
<i>Clostridium</i> spp.	F	CGGTACCTGACTAAGAAGC	50	429 (Bartosch <i>et al.</i> , 2004)
	R	AGTTTGATTCTTGCGAACG		
	Probe	TAAAGGGAGCGTAGGCGGATGATTA	60	
<i>S. pyogenes</i>	F	GTCAACATGCAGCTACAGGA	49	256 (Louie <i>et al.</i> , 1998)
	R	AATACCAACATCAGCATCA		
	Probe	GCAGGTTTTGCCTCTCATATTAAGTCTT	59	

seconds, then cooling to annealing temp (as listed in Table 1) for 30 seconds, and heating at 72°C for 30. Finally, each PCR reaction was ended with a final extension step at 72°C for 10 minutes.

#### Oligonucleotide Probes Design and synthesis

Segments of 20–30 mer oligonucleotides with similar lengths, melting, and GC content with the optimum BLAST hit were selected after comparison (<http://www.ncbi.nlm.nih.gov/>

BLAST/) with all available sequences in the GenBank database. All oligonucleotides used in this study were listed in Table 1.

#### Oligo Array Printing

In a 384-well printing plate, using ArrayIt spotting buffer, each printing oligo solution was prepared to a final concentration of 50 pmol µl<sup>-1</sup>. Spotting was carried out onto microarray slides in triplicate for each probe (Sciencion, Berlin, Germany) using the

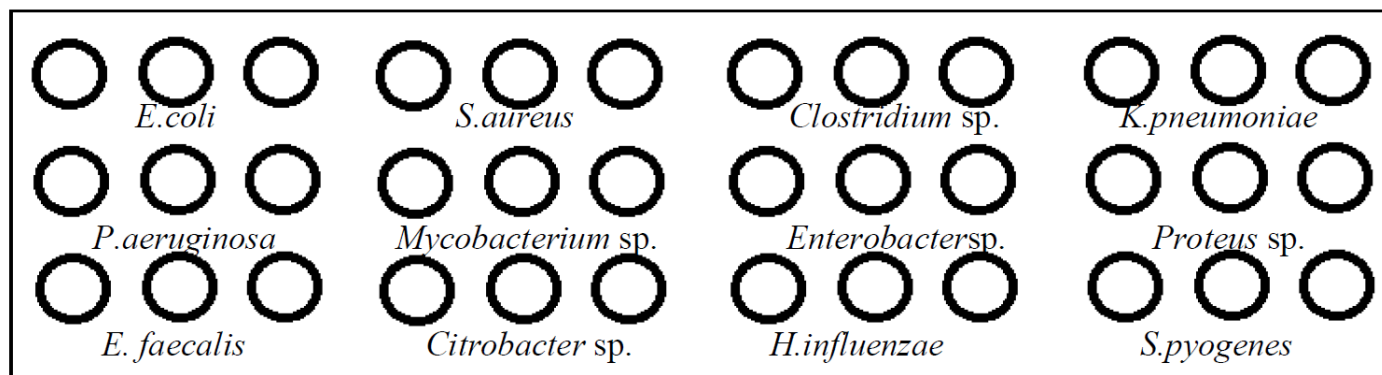


Figure 1. Different ssDNA probes spotted in the schematic representation of each microarray slide.

SpotBot microarrayer (ArrayIt, Sunnyvale, CA) spotting machine (Fig. 1).

### Microarray Testing

Samples were labeled and then resuspended in a hybridization buffer (Scienion, Berlin, Germany). The method was carried out according to the recommendations of the manufacturer (Scienion, Berlin, Germany). In a final volume of 16, 8  $\mu$ l of the PCR products was mixed with 8  $\mu$ l of the hybridization buffer. The prehybridization step was carried out using 20  $\mu$ l of the prehybridization solution (Scienion, Berlin, Germany). Labeled samples were then applied to a 42°C prewarmed microarray slide. Hybridizations were carried out in a hybridization station (ArrayIt, Sunnyvale, CA) using the hybridization mix, previously boiled for 2 minutes and cooled on ice. Hybridization was carried out by incubation at 42°C for 12 hours. Finally, at room temperature, using buffers I, II, and III (Scienion, Berlin, Germany), washing was carried out. Microarray staining was carried out by a streptavidin biotin color development system (Fermentas, Waltham, MA) using the manufacturer's instructions. For documentation of the results, images were acquired using the ArrayIt Microarray Scanner (ArrayIt, Sunnyvale, CA). Signal intensities were recorded using the Spotware software after subtracting the local background values from the per-sample median.

## RESULTS

### Results of bacterial identification

Twenty wound samples were analyzed by molecular testing. Overall, the most common organisms identified using molecular PCR testing were *Citrobacter* spp. (100%) in 20 samples, *Enterobacter* spp. (100%) in 20 samples, and *K. pneumoniae* (100%) in 20 samples, followed by *P. aeruginosa* (90%) in 18 samples, *Proteus* spp. in 16 samples (80%), and *E. coli* (60%) in 12 samples. However, *S. aureus* was rarely identified in two samples (10%). Other bacterial taxa such as *E. faecalis*, *H. influenzae*, and *Mycobacterium* spp. could not be detected in any isolate. Control samples were free from the tested pathogens. Concerning a mixed microbial infection, a total of eight wounds were found to have five different bacterial taxa; in addition, 10 of the total samples (50%) had six bacterial taxa. However, two of the total wounds (10%) had only four bacterial taxa (Table 2).

Table 2. Comparison between PCR and microarray results.

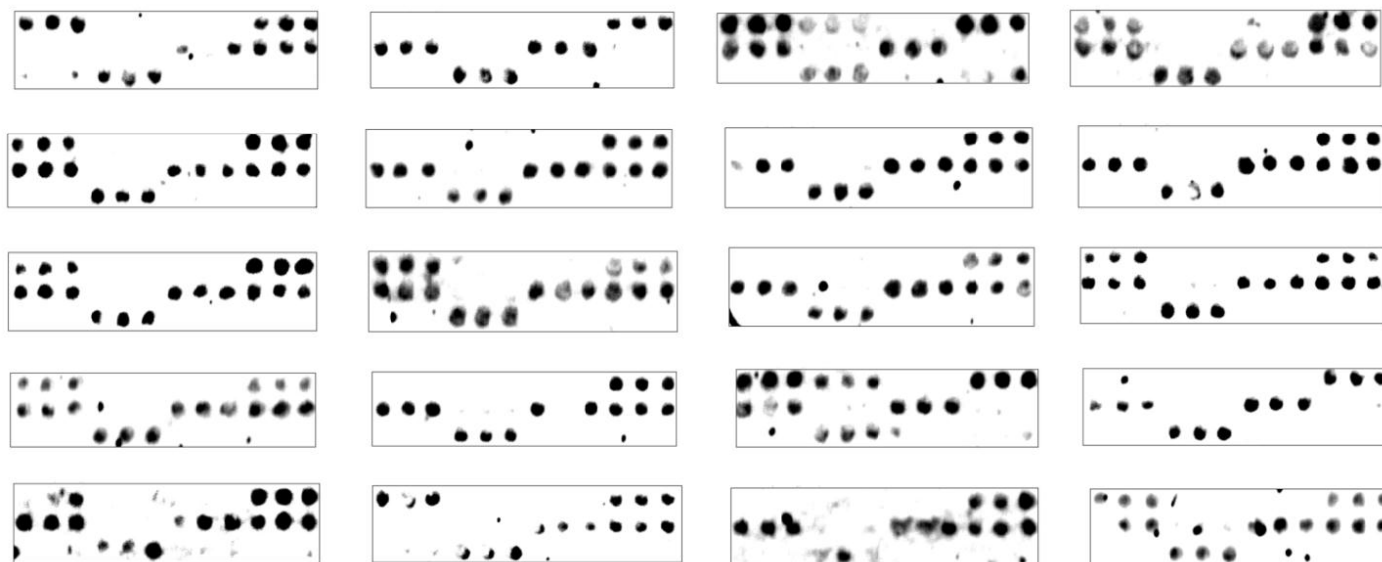
Organism	Comparison of PCR with specific primers and Microarray results		Total number of patients with a positive result
	No of samples positive PCR	Microarrays	
<i>Mycobacterium</i> spp.	0	0	0
<i>S. aureus</i>	2	2	2
<i>P. aeruginosa</i>	18	18	18
<i>K. pneumoniae</i>	20	20	20
<i>H. influenzae</i>	0	0	0
<i>E. coli</i>	12	12	12
<i>E. faecalis</i>	0	0	0
<i>Proteus</i> spp.	16	16	16
<i>Enterobacter</i> spp.	20	20	20
<i>Citrobacter</i> spp.	20	20	20
<i>S. pyogenes</i>	0	0	0
<i>Clostridium</i> spp.	0	0	0

### Microarray Testing of clinical samples

In this study, by DNA microarray testing, the proportions of bacteria identified from the 20 positive samples were *Citrobacter* spp. (100%), *Enterobacter* spp. (100%), and *K. pneumoniae* (100%), followed by *P. aeruginosa* (90%), *Proteus* (80%), and *E. coli* (60%). However, *S. aureus* was rarely identified (10%). A mixed bacterial infection could be identified in all different samples as four, five, or six different bacteria were identified in each sample as shown in Figure 2. No difference could be observed when compared to the results obtained by PCR (Table 3).

## DISCUSSION

Microbial molecular diagnostic tests, in comparison with traditional culture methods, enable more patient care improvement. However, it is also necessary to continue to include all these introduced newer methods. In addition, it has been proven that culture-based methodologies in bacterial detection are markedly less sensitive to DNA detection methodologies (Han et al., 2011). Moreover, the results obtained using these traditional culture-based methods are usually associated with misidentification reflecting overestimation of the relative presence of easily cultured and identifiable microbes (Davies et al., 2004).



**Figure 2.** Results of hybridization with the target wound sample DNAs from Mansoura Hospital.

According to the recent reports, the results obtained using PCR and 16S sequencing commonly used have demonstrated the close correlation between most of these molecular methods. As previously documented, different molecular methods such as real-time, uniplex, and multiplex PCR, especially in mixed samples, have enhanced both the speed and the sensitivity of microbial detection (Gebert *et al.*, 2008; Lehmann *et al.*, 2008). However, multiplex PCR, in each reaction, can only detect a limited number of pathogens (Edin *et al.*, 2015; Gadsby *et al.*, 2015). For these reasons, when dealing with samples containing a mixed culture or mostly environmental samples, a comprehensive view of microbial communities is required. In the same respect, a better solution is provided by DNA microarrays, especially in mixed microbial infections.

Microarray testing is usually based on the panel of taxa selection, detection capacity, and probe coverage, which may differ between sequence targets. Microarray-detecting oligonucleotides are mainly designed based on the available sequence data and the variation between target organisms exhibiting reduced power for identifying other different organisms (Cannon *et al.*, 2010; Shen *et al.*, 2015).

As previously reported (Costello *et al.*, 2009; Grice and Segre, 2011; Grice *et al.*, 2009; Oh *et al.*, 2014), in sequencing surveys of healthy adults, dry, moist, and sebaceous microenvironmental changes usually affect the relative abundance of bacterial taxa. However, a lower bacterial diversity is usually detected (Scharschmidt and Fischbach, 2013), as the normal skin is usually dominated by only a few taxa, mainly lipophilic *Propionibacterium* species of the phylum Actinobacteria thriving sebaceous sites, while *Staphylococcus* and *Corynebacterium* species of the phyla Firmicutes and Actinobacteria are preferentially abundant in moist areas (Costello *et al.*, 2009; Grice *et al.*, 2009). Interestingly, some members of the skin microbiota such as *Staphylococcus epidermidis* are nonpathogenic; however, when reaching the blood circulation, serious systemic diseases in some individuals can be caused (Blum and Rodvold, 1987). In this study,

to distinguish some major bacterial species, frequently causing wound-associated infections including *E. faecalis*, *Enterobacter* spp., *K. pneumoniae*, *H. influenzae*, *E. coli*, *S. pyogenes*, *Clostridium* spp., *S. aureus*, *Mycobacterium* spp., *Citrobacter* spp., *P. aeruginosa*, and *Proteus* spp., 12 oligonucleotide probes, complementary to 16S PCR products, were selected for detection based on several species-specific regions of each pathogen.

In samples obtained in the current study, by DNA microarray testing, all samples (100%) were found to be positive and identified mainly as Gram-negative bacteria, which is consistent with some previous studies in Saudi Arabia (Alkaaki *et al.*, 2019; Al-Mulhim *et al.*, 2014) and other countries (Allegranzi *et al.*, 2011). The percentages of identified bacteria were *Citrobacter* spp. (100%), *Enterobacter* spp., (100%), and *K. pneumoniae* (100%), followed by *P. aeruginosa* (90%), *Proteus* (80%), and *E. coli* (60%). Similarly, in a previous study, the same bacterial taxa were detected, but at lower percentages, 56.7%, 6.7%, and 3.3% for *E. coli*, *Klebsiella* spp., and *Enterobacter* spp., respectively (Adwan *et al.*, 2016). In addition, an increased level of *Pseudomonas* species (43%) was detected in a previous study (Gupta *et al.*, 2019), compared to *K. pneumoniae* and *Acinetobacter baumannii*, which were detected at the lower prevalence of 28% and 14.83%, respectively. Moreover, other studies in a tertiary care hospital in India reported the predominance of *P. aeruginosa*, followed by *K. pneumoniae* and *A. baumannii* (Dash *et al.*, 2013; Singh *et al.*, 2003). Interestingly, the wound microbiome, in which *Pseudomonas* dominates, exhibited increased temporal stability against multiantibiotic therapy in comparison to staphylococcal infections (Tipton *et al.*, 2017). However, other different results were obtained in another study on surgical site infections (Negi *et al.*, 2015), as the commonest organism identified was *S. aureus* (50.4%), followed by *E. coli* (23.02%), *P. aeruginosa* (7.9%), and *Citrobacter* spp. (7.9%). In addition, in another study (Be *et al.*, 2014), in wound samples, *A. baumannii* was mainly detected (23%) in 28 samples. In this current study, *S. aureus* was rarely identified in 10% of total isolates. A similar observation was

**Table 3.** Schematic representation of hybridization results obtained with the target DNAs from wound samples obtained from Mansoura Hospital.

	<i>E.coli</i>	<i>S.aureus</i>	<i>Clostridium spp.</i>	<i>K.pneumoniae</i>	<i>P.aeruginosa</i>	<i>Mycobacterium spp.</i>	<i>Enterobacter spp.</i>	<i>Proteus spp.</i>	<i>E. faecalis</i>	<i>Citrobacter spp.</i>	<i>H.influenzae</i>	<i>S.pyogenes</i>
1	■			■			■			■		
2					■		■					
3	■	■		■			■			■		
4	■	■		■			■			■		
5	■			■			■			■		
6				■			■			■		
7				■			■			■		
8				■			■			■		
9	■			■			■			■		
10	■			■			■			■		
11				■			■			■		
12	■			■			■			■		
13	■			■			■			■		
14				■			■			■		
15	■	■		■			■	■		■		
16				■			■			■		
17	■			■			■			■		
18	■			■	■		■			■		
19				■			■			■		
20	■			■			■			■		

previously reported, as *S. aureus* was rarely detected (two wound samples) in one study using a microarray (Be *et al.*, 2014) and in another study on combat wound colonization (Brown *et al.*, 2011). On the contrary, a higher prevalence of *S. aureus* (30%) could be detected in one previous study (Adwan *et al.*, 2016). In addition, in another study, the most commonly isolated organism was *S. aureus*, followed by coagulase-negative *Staphylococci* (CNS), *Enterococcus spp.*, and *E. coli*, while the pathogen detection was mainly dependent on the surgical procedure (Owens and Stoessel, 2008). Moreover, in another study, *S. aureus* was the most frequent pathogen detected (22.8%), while other pathogens, namely, *P. aeruginosa* (20.1%), *E. coli* (12.2%), *Klebsiella spp.*, (12.2%),

*Enterobacter spp.*, (7.7%), and *Enterococcus spp.* (5.9%), were identified at lower percentages (El-Saed *et al.*, 2020).

Interestingly, in previous studies, not so much data were found concerning the detection of mixed wound infection. In this current study, four, five, or six different bacteria were identified in each sample, representing mixed microbial infections. *K. pneumoniae*, *P. aeruginosa*, *Enterobacter spp.*, *Proteus spp.*, and *Citrobacter spp.* were the most identified mixed infections.

## CONCLUSION

In the present study, by PCR detection, *Citrobacter spp.*, *Enterobacter spp.*, *K. pneumoniae*, *P. aeruginosa*, *Proteus spp.*, and *E. coli* were mainly detected. In addition, pathogen detection with both PCR and the DNA chip indicated 100% matching. Moreover, the use of a DNA chip in a mixed culture facilitates the fast identification of wound-infecting pathogens and the proper treatments strategies.

## CONFLICTS OF INTEREST

The author declares that there are no conflicts of interest regarding the publication of this paper.

## FUNDING

This study was funded by the Competitive Funding Projects Postgraduate Research and Cultural Affairs Sector, Mansoura University.

There were no financial interests related to the material in the manuscript.

## REFERENCES

- Adwan G, Hasan NA, Sabra I, Sabra D, Al-butmah S, Odeh S, Abd Albake Z, Badran H. Detection of bacterial pathogens in surgical site infections and their antibiotic sensitivity profile. *Int J Med Res Health Sci*, 2016; 5(5):75–82.
- Alkaaki A, Al-Radi OO, Khoja A, Alnawawi A, Maghrabi A, Altaf A, Aljiffry M. Surgical site infection following abdominal surgery: a prospective cohort study. *Can J Surg*, 2019;62(2):111–7.
- Allegranzi B, Bagheri Nejad S, Combescure C, Graafmans W, Attar H, Donaldson L, Pittet D. Burden of endemic health-care-associated infection in developing countries: systematic review and meta-analysis. *Lancet*, 2011; 377(9761):228–41.
- Al-Mulhim F, Baragbah M, Sadat-Ali M, Alomran A, Azam M. Prevalence of surgical site infection in orthopedic surgery: a 5-year analysis. *Int Surg*, 2014; 99(3):264–8.
- Anbazhagan D, Kathirvalu GG, Mansor M, Yan GOS, Yasim M, Devi Sekaran S. Multiplex polymerase chain reaction (PCR) assays for the detection of Enterobacteriaceae in clinical samples. *Afr J Microbiol Res*, 2010; 4(11):1186–91.
- Baishya J, Wakeman C. Selective pressures during chronic infection drive microbial competition and cooperation. *NPJ Biofilms Microbiomes*, 2019; 5:16.
- Bartosch S, Fite A, Macfarlane G, McMurdo M. Characterization of bacterial communities in feces from healthy elderly volunteers and hospitalized elderly patients by using real-time PCR and effects of antibiotic treatment on the fecal microbiota. *Appl Environ Microbiol*, 2004; 70:3575–81.
- Be NA, Allen JE, Brown TS, Gardner SN, McLoughlin KS, Forsberg JA, Kirkup BC, Chromy BA, Luciw PA, Elster EA, Jaing CJ. Microbial profiling of combat wound infection through detection microarray and next-generation sequencing. *J Clin Microbiol*, 2014; 52(7):2583–94.
- Blum R, Rodvold K. Recognition and importance of *Staphylococcus epidermidis* infections. *Clin Pharm*, 1987; 6:464–75.

- Bowler PG, Davies BJ. The microbiology of infected and noninfected leg ulcers. *Int J Dermatol*, 1999; 38(8):573–8.
- Bowler PG, Duerden BI, Armstrong DG. Wound microbiology and associated approaches to wound management. *Clin Microbiol Rev*, 2001; 14(2):244–69.
- Breitkopf C, Hammel D, Scheld HH, Peters G, Becker K. Impact of a molecular approach to improve the microbiological diagnosis of infective heart valve endocarditis. *Circulation*, 2005; 111(11):1415–21.
- Brown T, Hawksworth J, Sheppard F, Tadaki D, Elster E. Inflammatory response is associated with critical colonization in combat wounds. *Surg Infect (Larchmt)*, 2011; 12:351–7.
- Cannon GA, Carr MJ, Yandle Z, Schaffer K, Kidney R, Hosny G, Doyle A, Ryan J, Gunson R, Collins T, Carman WF, Connell J, Hall WW. A low density oligonucleotide microarray for the detection of viral and atypical bacterial respiratory pathogens. *J Virol Methods*, 2010; 163(1):17–24.
- Cole JM, Schuetz AN, Hill CE, Nolte, FS. Development and evaluation of a real-time PCR assay for detection of *K. pneumoniae* carbapenemase genes. *J Clin Microbiol*, 2009; 47(2):322–6.
- Costello EK, Lauber CL, Hamady M, Fierer N, Gordon JI, Knight R. Bacterial community variation in human body habitats across space and time. *Science*, 2009; 326(5960):1694–7.
- Cutting KF, White R. Defined and refined: criteria for identifying wound infection revisited. *Br J Community Nurs*, 2004; 9(3):S6–15.
- Dash M, Mishra P, Routray S. Bacteriological profile and antibiogram of aerobic burn wound isolates in a tertiary care hospital, Odisha, India. *Int J Med Med Sci*, 2013; 3.
- Davies C, Hill K, Wilson M, Stephens P, Hill C, Harding K, Thomas D. Use of 16S ribosomal DNA PCR and denaturing gradient gel electrophoresis for analysis of the microfloras of healing and nonhealing chronic venous leg ulcers. *J Clin Microbiol*, 2004; 42:3549–57.
- Deussenbery C, Kalan L, Meisel J, Gardner S, Grice E, Spiller K. Human macrophage response to microbial supernatants from diabetic foot ulcers. *Wound Repair Regen*, 2019; 27(6):598–608.
- Dowd SE, Sun Y, Secor PR, Rhoads DD, Wolcott BM, James GA, Wolcott RD. Survey of bacterial diversity in chronic wounds using pyrosequencing, DGGE, and full ribosome shotgun sequencing. *BMC Microbiol*, 2008b; 8:43.
- Dowd SE, Wolcott RD, Sun Y, McKeehan T, Smith E, Rhoads D. Polymicrobial nature of chronic diabetic foot ulcer biofilm infections determined using bacterial tag encoded FLX amplicon pyrosequencing (bTEFAP). *PLoS One*, 2008a; 3(10):e3326.
- Ecker DJ, Sampath R, Li H, Massire C, Matthews HE, Toleno D. New technology for rapid molecular diagnosis of bloodstream infections. *Expert Rev Mol Diagn*, 2010; 10(4):399–415.
- Edin A, Granholm S, Koskiniemi S, Allard A, Sjostedt A, Johansson A. Development and laboratory evaluation of a real-time PCR assay for detecting viruses and bacteria of relevance for community-acquired pneumonia. *J Mol Diagn*, 2015; 17(3):315–24.
- El-Saed A, Balkhy HH, Alshamrani MM, Aljohani S, Alsaedi A, Al Nasser W, El Gammal A, Almohrij SA, Alyousef Z, Almunif S, Alzahrani M. High contribution and impact of resistant gram negative pathogens causing surgical site infections at a multi-hospital healthcare system in Saudi Arabia, 2007–2016. *BMC Infect Dis*, 2020; 20(1):275.
- Espy MJ, Uhl JR, Sloan LM, Buckwalter SP, Jones MF, Vetter EA, Yao JD, Wengenack NL, Rosenblatt JE, Cockerill FR, Smith, TF. Real-time PCR in clinical microbiology: applications for routine laboratory testing. *Clin Microbiol Rev*, 2006; 19(1):165–256.
- Feizabadi MM, Majnooni A, Nomanpour B, Fatolahzadeh B, Raji N, Delfani S, Habibi M, Asadi S, Parvin M. Direct detection of *Pseudomonas aeruginosa* from patients with healthcare associated pneumonia by real time PCR. *Infect Genet Evol*, 2010; 10(8):1247–51.
- Gadsby NJ, McHugh MP, Russell CD, Mark H, Conway Morris A, Laurenson IF, Hill AT, Templeton KE. Development of two real-time multiplex PCR assays for the detection and quantification of eight key bacterial pathogens in lower respiratory tract infections. *Clin Microbiol Infect*, 2015; 21(8):788.e1–13.
- Gebert S, Siegel D, Wellinghausen N. Rapid detection of pathogens in blood culture bottles by real-time PCR in conjunction with the pre-analytic tool MolYsis. *J Infect*, 2008; 57(4):307–16.
- Giacometti A, Cirioni O, Schimizzi AM, Del Prete MS, Barchiesi F, D'Errico MM, Petrelli E, Scalise G. Epidemiology and microbiology of surgical wound infections. *J Clin Microbiol*, 2000; 38(2):918–22.
- Ginige MP, Kaksonen, AH, Morris C, Shackelton M, Patterson BM. Bacterial community and groundwater quality changes in an anaerobic aquifer during groundwater recharge with aerobic recycled water. *FEMS Microbiol Ecol*, 2013; 85(3):553–67.
- Grice EA, Kong HH, Conlan S, Deming CB, Davis J, Young AC, Bouffard GG, Blakesley RW, Murray PR, Green ED, Turner ML, Segre JA. Topographical and temporal diversity of the human skin microbiome. *Science*, 2009; 324(5931):1190–2.
- Grice EA, Segre JA. The skin microbiome. *Nat Rev Microbiol*, 2011; 9:244–53.
- Gupta M, Naik AK, Singh SK. Bacteriological profile and antimicrobial resistance patterns of burn wound infections in a tertiary care hospital. *Heliyon*, 2019; 5(12):e02956.
- Han A, Zenilman JM, Melendez JH, Shirliff ME, Agostinho A, James G, Stewart PS, Mongodin EF, Rao D, Rickard AH, Lazarus GS. The importance of a multifaceted approach to characterizing the microbial flora of chronic wounds. *Wound Repair Regen* 2011; 19(5):532–41.
- Hill KE, Davies CE, Wilson MJ, Stephens P, Harding KG, Thomas DW. Molecular analysis of the microflora in chronic venous leg ulceration. *J Med Microbiol*, 2003; 52(Pt 4):365–9.
- Jin LQ, Li JW, Wang SQ, Chao FH, Wang XW, Yuan ZQ. Detection and identification of intestinal pathogenic bacteria by hybridization to oligonucleotide microarrays. *World J Gastroenterol*, 2005; 11(48):7615–9.
- Kalan L, Brennan M. The role of the microbiome in nonhealing diabetic wounds. *Ann N Y Acad Sci*, 2019; 1435(1):79–92.
- Lehmann LE, Hunfeld KP, Emrich T, Haberhausen G, Wissing H, Hoelt A, Stuber F. A multiplex real-time PCR assay for rapid detection and differentiation of 25 bacterial and fungal pathogens from whole blood samples. *Med Microbiol Immunol*, 2008; 197(3):313–24.
- Loesche M, Gardner S, Kalan L, Horwinski J, Zheng Q, Hodkinson BP, Tyldsley AS, Franciscus CL, Hillis SL, Mehta S, Margolis DJ, Grice EA. Temporal stability in chronic wound microbiota is associated with poor healing. *J Invest Dermatol*, 2017; 137(1):237–44.
- Louie L, Simor AE, Louie M, McGeer A, Low DE. Diagnosis of group A streptococcal necrotizing fasciitis by using PCR to amplify the streptococcal pyrogenic exotoxin B gene. *J Clin Microbiol*, 1998; 36:1769–71.
- Luo RF, Scahill MD, Banaei N. Comparison of single-copy and multicopy real-time PCR targets for detection of *Mycobacterium tuberculosis* in paraffin-embedded tissue. *J Clin Microbiol*, 2010; 48(7):2569–70.
- Maheux AF, Picard FJ, Boissinot M, Bissonnette L, Paradis S, Bergeron MG. Analytical comparison of nine PCR primer sets designed to detect the presence of *Escherichia coli*/Shigella in water samples. *Water Res*, 2009; 43(12):3019–28.
- Mao Z, Zheng H, Wang X, Lin S, Sun Y, Jiang B. DNA microarray for direct identification of bacterial pathogens in human stool samples. *Digestion*, 2008; 78(2–3):131–8.
- Melling AC, Ali B, Scott EM, Leaper DJ. Effects of preoperative warming on the incidence of wound infection after clean surgery: a randomised controlled trial. *Lancet*, 2001; 358(9285):876–80.
- Meyers B. Wound management: principles and practice: principles and practice. 2nd edition, Pearson Prentice Hall. Upper Saddle River, NJ, pp 100–102, 2008.
- Min KR, Galvis A, Nole KLB, Sinha R, Clarke J, Kirsner RS, Ajdic D. Association between baseline abundance of *Peptoniphilus*, a Gram-positive anaerobic coccus, and wound healing outcomes of DFUs. *Plos One*, 2020; 15(1):e0227006.
- Negi V, Pal S, Juyal D, Sharma MK, Sharma N. Bacteriological profile of surgical site infections and their antibiogram: a study from

resource constrained rural setting of Uttarakhand State, India. *J Clin Diagn Res*, 2015; 9(10):DC17–20.

Nosrati H, Khouy RA, Nosrati A, Khodaei M, Banitalebi-Dehkordi M, Ashrafi-Dehkordi K, Sanami S, Alizadeh Z. Nanocomposite scaffolds for accelerating chronic wound healing by enhancing Angiogenesis. *J Nanobiotechnol*, 2021; 19:1.

Oh J, Byrd AL, Deming C, Conlan S, Kong, HH, Segre JA. Biogeography and individuality shape function in the human skin metagenome. *Nature*, 2014; 514(7520):59–64.

Owens CD, Stoessel K. Surgical site infections: epidemiology, microbiology and prevention. *J Hosp Infect*, 2008; 70(Suppl 2):3–10.

Pimay JP, De Vos D, Duinslaeger L, Reper P, Vandenvelde C, Cornelis P, Vanderkelen A. Quantitation of *Pseudomonas aeruginosa* in wound biopsy samples: from bacterial culture to rapid “real-time” polymerase chain reaction. *Crit Care*, 2000; 4(4):255–61.

Poppert S, Essig A, Stoehr B, Steingruber A, Wirths B, Juretschko S, Reischl U, Wellinghausen, N. Rapid diagnosis of bacterial meningitis by real-time PCR and fluorescence in situ hybridization. *J Clin Microbiol*, 2005; 43(7):3390–7.

Price LB, Liu CM, Melendez JH, Frankel YM, Engelthaler D, Aziz M, Bowers J, Rattray R, Ravel J, Kingsley C, Keim PS, Lazarus GS, Zenilman JM. Community analysis of chronic wound bacteria using 16S rRNA gene-based pyrosequencing: impact of diabetes and antibiotics on chronic wound microbiota. *PLoS One*, 2009; 4(7):e6462.

Rathnayake IU, Hargreaves M, Huygens F. Genotyping of *Enterococcus faecalis* and *Enterococcus faecium* isolates by use of a set of eight single nucleotide polymorphisms. *J Clin Microbiol*, 2011; 49:367–72.

Rothman RE, Majmudar MD, Kelen GD, Madico G, Gaydos CA, Walker T, Quinn TC. Detection of bacteremia in emergency department patients at risk for infective endocarditis using universal 16S rRNA primers in a decontaminated polymerase chain reaction assay. *J Infect Dis*, 2002; 186(11):1677–81.

Ruimy R, Dos-Santos M, Raskine L, Bert F, Masson R, Elbaz S, Bonnal C, Lucet JC, Lefort A, Fantin B, Wolff M, Hornstein M, Andreumont A. Accuracy and potential usefulness of triplex real-time PCR for improving antibiotic treatment of patients with blood cultures showing clustered gram-positive cocci on direct smears. *J Clin Microbiol*, 2008; 46(6):2045–51.

Scharschmidt T, Fischbach M. What lives on our skin: ecology, genomics and therapeutic opportunities of the skin microbiome. *Drug Discov Today Dis Mech*, 2013; 10:3–4.

Seng P, Rolain JM, Fournier PE, La Scola B, Drancourt M, Raoult D. MALDI-TOF-mass spectrometry applications in clinical microbiology. *Future Microbiol*, 2010; 5(11):1733–54.

Shen H, Zhu B, Wang S, Mo H, Wang J, Li J, Zhang C, Zeng H, Guan L, Shi W, Zhang Y, Ma X. Association of targeted multiplex PCR with resequencing microarray for the detection of multiple respiratory pathogens. *Front Microbiol*, 2015; 6:532.

Singh NP, Goyal R, Manchanda V, Das S, Kaur I, Talwar V. Changing trends in bacteriology of burns in the burns unit, Delhi, India. *Burns*, 2003; 29(2):129–32.

Sloan TJ, Turton JC, Tyson J, Musgrove A, Fleming VM, Lister MM, Loose MW, Sockett RE, Diggle M, Game FL, Jeffcoate W. Examining diabetic heel ulcers through an ecological lens: microbial community dynamics associated with healing and infection. *J Med Microbiol*, 2019; 68(2):230–40.

Tipton C, Mathew M, Wolcott R, Wolcott R, Kingston T, Phillips C. Temporal dynamics of relative abundances and bacterial succession in chronic wound communities. *Wound Repair Regen*, 2017; 25(4):673–9.

van Ketel RJ, de Wever B, van Alphen L. Detection of *Haemophilus influenzae* in cerebrospinal fluids by polymerase chain reaction DNA amplification. *J Med Microbiol*, 1990; 33(4):271–6.

Weller C, Team V, Sussman G. First-line interactive wound dressing update: a comprehensive review of the evidence. *Front Pharmacol*, 2020; 11:155.

Wellinghausen N, Wirths B, Franz AR, Karolyi L, Marre R, Reischl U. Algorithm for the identification of bacterial pathogens in positive blood cultures by real-time LightCycler polymerase chain reaction (PCR) with sequence-specific probes. *Diagn Microbiol Infect Dis*, 2004; 48(4):229–41.

Yang S, Lin S, Kelen GD, Quinn TC, Dick JD, Gaydos CA, Rothman RE. Quantitative multiprobe PCR assay for simultaneous detection and identification to species level of bacterial pathogens. *J Clin Microbiol*, 2002; 40(9):3449–54.

Yang S, Ramachandran P, Hardick A, Hsieh YH, Quianzon C, Kuroki M, Hardick J, Kecojevic A, Abeygunawardena A, Zenilman J, Melendez J, Doshi V, Gaydos C, Rothman RE. Rapid PCR-based diagnosis of septic arthritis by early Gram-type classification and pathogen identification. *J Clin Microbiol*. 2008; 46(4):1386–90.

#### How to cite this article:

El-Sokkary MMA. Microbial profiling of wound pathogens in isolates from an Egyptian hospital using a microarray chip. *J Appl Pharm Sci*, 2021; 11(08):139–146.